

TOTO KU

Powered by

JVC

5 Megapixel 21.3" Color Display

CCL 550i2

5 Megapixel
Color Display



Ultrasound, CT, MRI and digital mammography on a single screen.
All-in-one solution for multi modality visualization.

i model *i2*

21.3"

DisplayPort
&
DVI-D

1000
cd/m²

1300:1

Calibration
Function

16Bit
LUT

10-Bit
Display

OSD

Luminance
Uniformity
Correction

LED
Backlight

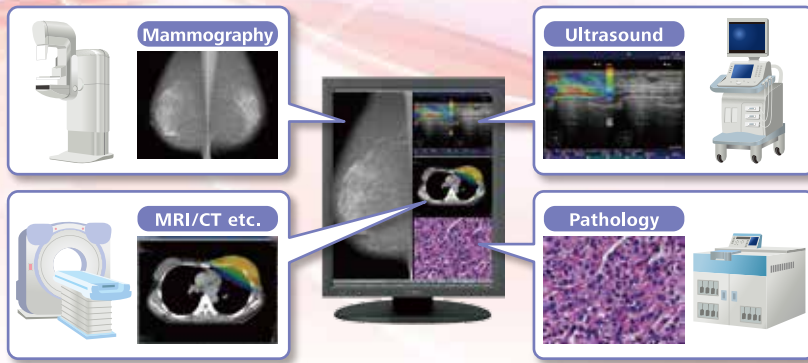
Dynamic
Gamma

Auto
Text
Mode

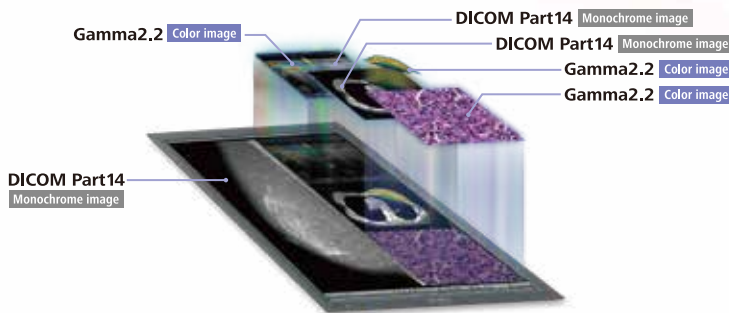
LED
Indicator

5MP color display for multi modality

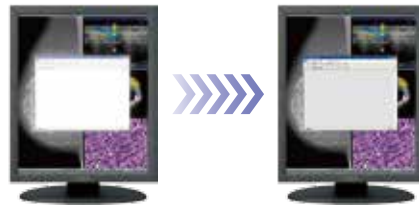
CCL550i2 can accommodate images from any modality including ultrasound, CT, MRI, pathology and digital mammography.

**Dynamic Gamma**

Color images are automatically recognized to provide optimized contrast, brightness and gamma. No user intervention is required.

**Auto Text Mode**

Automatic brightness control for text data to reduce eye strain for patient lists and reporting application.

**LED Backlight**

New LED backlight system provides more stability in images, energy saving and an extended period of lifetime.

Luminance Stabilizing System - λ-Sentinel

Front luminance sensor constantly monitors and accurately stabilizes luminance on the screen to optimize image quality.

Uniformity Equalizer

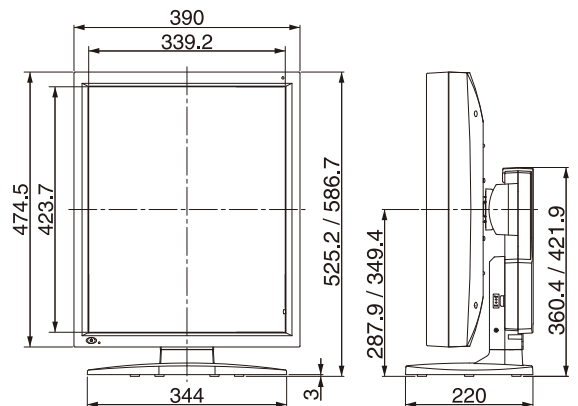
Luminance and color uniformity correction system produces stable images across the screen.

DICOM Conformance Check

User friendly OSD functions include DICOM conformance check function.

Specifications

Model Name		CCL550i2 /AR, CCL550i2 /F
LCD Panel	Technology	21.3-inch color TFT IPS technology
	Display Area	338 mm x 422 mm
	Pixel Pitch	0.165 mm x 0.165 mm
	Contrast Ratio	1300:1 (typ)
	Maximum Luminance	1000 cd/m ² (typ) 500 cd/m ² / 410 cd/m ² (calibrated)
	Viewing Angle	176° vertical and horizontal
Visual Performance	Native Resolution	2048x2560
	Display Colors	16.77 million colors from a palette of 280 trillion colors 1.06 billion colors with DisplayPort and 10-bit viewer
Interface	Input Signal	DVI-D (DVI 1.0 compliant) DisplayPort (DisplayPort 1.1a compliant)
	Plug and Play	DDC2B compliant
Input Power Supply	Input Power Supply	100V - 240V 50/60Hz
	Maximum Power Consumption	95W (typ)
Features	Calibration Control	Luminance, Gamma, Color temperature Storing 3 sets of LUT
	OSD Information Display	Model name, Serial No., Total operating time, Calibration settings (Operating time since last calibration, Luminance, Gamma), Current luminance and ambient light, DICOM conformance
	USB Hub	USB Rev.2.0 compliant, Self-powered, USB upstream connector (x1), USB downstream connector (x2)
	Other Features	Luminance / color uniformity correction, Hardware pivot, LED indicator, Multiple LUT, Self DICOM check
Approvals		ANSI/AAMI ES60601-1(2005), CAN/CSA-C22.2 No. 60601-1(2008), FDA 510(k)(for Breast Tomosynthesis and Mammography), FCC Part15 subpart B Class B, ICES-003-B, CE (EN60601-1, EN60601-1-2), VCCI-B, RCM, RoHS, J-MOSS
Physical Characteristics	Dimensions (W x H x D)	Landscape : 475 mm x 483 / 544 mm x 220 mm Portrait : 390 mm x 525 / 587 mm x 220 mm
	Weight	12 kg
	Tilt Stand	Tilt, Swivel, Portrait / Landscape
	Mount	VESA standard (100 mm x 100 mm)
	Security Slot	Anti-theft security slots (display and tilt stand)
Accessories		Power cord, DVI cable, DisplayPort cable, USB cable, User manual, Cleaning kit* *AR coating model only

Dimensions (mm)

●“TOTOKU” is a brand of medical and industrial displays manufactured and sold by JVCKENWOOD Corporation. ●Company names and product names are the registered trademarks of the respective companies. ●Product specifications and appearance are subject to change without notice. ●Colors in photographs may differ from actual colors due to the printing process. ●Images on screens are simulated.

**Safety Precautions**

- Please read the user's manual for safe and proper use.
- Do not expose the product to dust, moisture, steam, or oily smoke. It could cause fire, electric shock, or a failure.

Please contact our distributor below with inquiries and orders.

Healthcare Business Operation
JVCKENWOOD Corporation
3-12, Moriya-cho, Kanagawa-ku, Yokohama-shi, Kanagawa, 221-0022, JAPAN
TEL: +81-45-450-1908 FAX: +81-45-450-1926
E mail : medical-display.j@jvckenwood.com